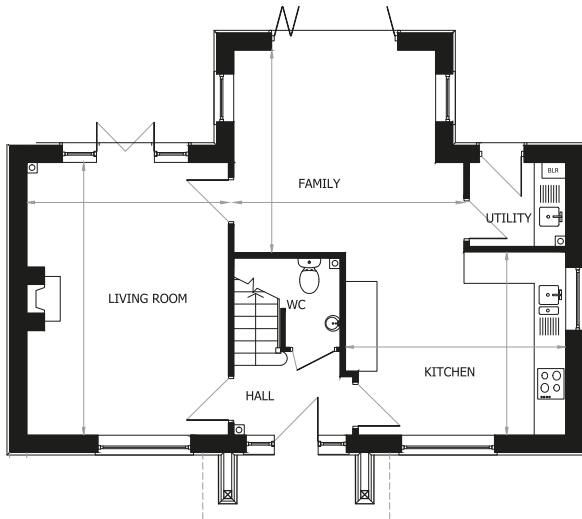


The Halcyon

PLOTS 4*, 14 & 18

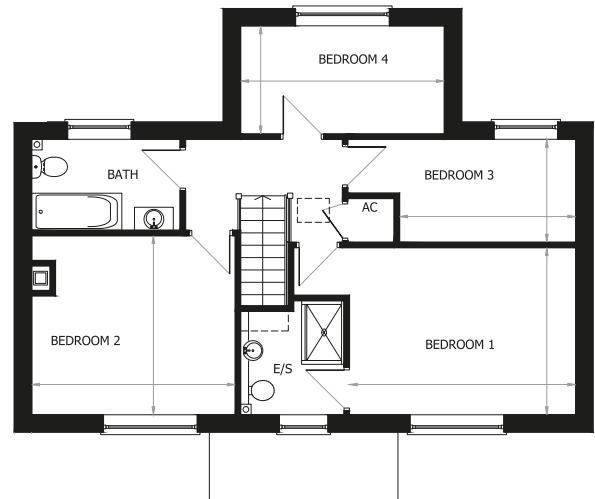


A stylish 4 bedroom detached or end-terraced house with garage



Ground Floor

Living Room	5.14m x 3.79m	16'10" x 12'5"
Family	4.33m x 3.81m	14'2" x 12'6"
Kitchen	4.14m x 3.44m	13'7" x 11'3"



First Floor

Bedroom 1	4.22m x 3.10m	13'10" x 10'2"
Bedroom 2	3.79m x 3.33m	12'5" x 10'11"
Bedroom 3	3.27m x 1.89m	10'9" x 6'2"
Bedroom 4	3.79m x 1.99m	12'5" x 6'6"

Computer generated image is indicative only and subject to change. Key: C - Cupboard AC - Airing Cupboard * - Denotes handed plot

— - Indicates points from which measurements have been taken